
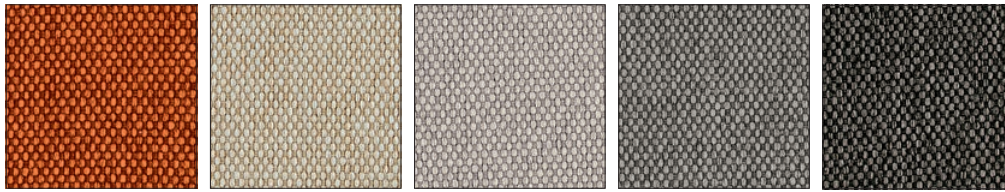


 PROGRAMMA MADE TO ORDER - CATEGORIA A

BERNA | 100% PL gr/m² 350 | Martindale >100.000 cicli/rubs - EN ISO 12947-2 



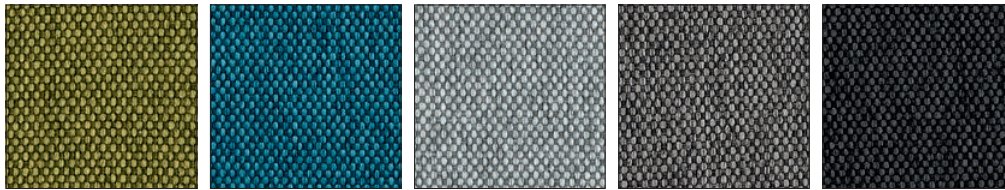
1S0V
ARANCIONE

1SA2
ECRU

1SA3
SABBIA

1SA4
ARGILLA

1SA6
TORTORA




1SA7
VERDE

1SA8
BLU

1SB0
CERULEO

1SB1
GRIGIO

1SB2
FUMO

VENICE | 100% PL gr/m² 430 | Martindale >100.000 cicli/rubs - EN ISO 12947-2 



S0F
SABBIA

S0G
TERRA

S0H
BOSCO

S0J
OCEANO

S0K
MATTONE

S0L
CENERE

S0U
ROSA



S0Y
NERO

S0Z
CANAPA

SVX
GHIACCIO

SVY
BEIGE

SVZ
VERDE

SWA
GRIGIO CHIARO

SWB
SENAPE



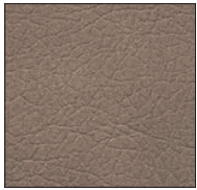
SWC
CIPRIA

SWD
AMBRA

SWE
BLU

 PROGRAMMA MADE TO ORDER - CATEGORIA A

VINTAGE | 80% PVC - 18% PL - 2% PU gr/m² 600 | Martindale 50.000 cicli/rubs - EN ISO 5470-2 Met.1



SOA
DESERTO



SOB
TABACCO



SOC
EBANO



SOW
CENERE



SOX
CANAPA

 **PROGRAMMA MADE TO ORDER - CATEGORIA B**

ASPEN | 90% PL - 10% CO gr/m² 430 | Martindale 60.000 cicli/rubs - EN ISO 12947-2



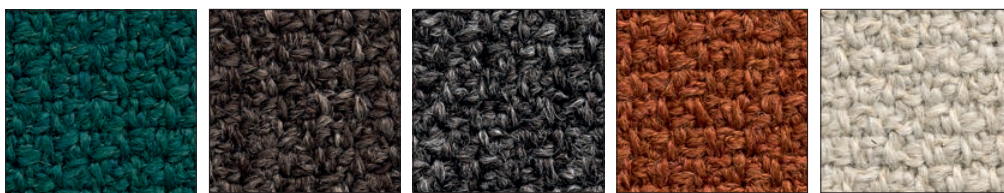
T2G
CANAPA

T2H
SABBIA

T2J
TORTORA

T2L
ANTRACITE

BERGEN | 100% PL gr/m² 569 | Martindale >100.000 cicli/rubs - EN ISO 12947-2



S2M
OTTANIO

S2N
TERRA

S2P
CENERE

S2Q
TERRACOTTA

S2R
SABBIA



S2S
ECRU

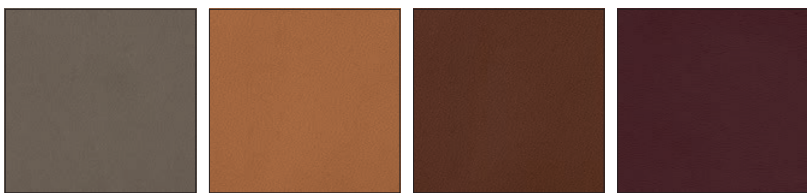
S2T
ROSSO

S2U
ROSA

S2V
SENAPE

S2W
VERDE

SOFTER | 75% PVC - 22% PL - 3% PU gr/m² 680 | Martindale >100.000 cicli/rubs - EN ISO 12947-2




SLR
FANGO

SLS
COGNAC

SLT
TABACCO

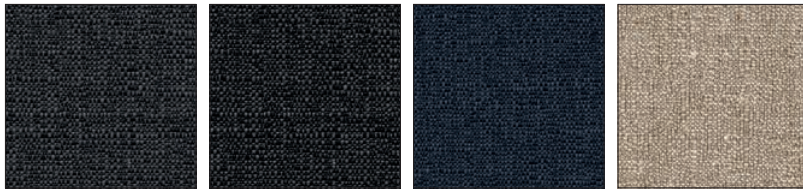
SLU
BORGOGNA

 PROGRAMMA MADE TO ORDER - CATEGORIA C



DENVER |  Teflon™ is a registered trademark of The Chemours Company FC LLC, used under license by Calligaris S.p.a.
41% VI - 21% PL - 18% LI - 15% CO - 4% PC - 1% AF gr/m² 327 | Martindale 20.000 cicli/rubs - EN ISO 12947-2

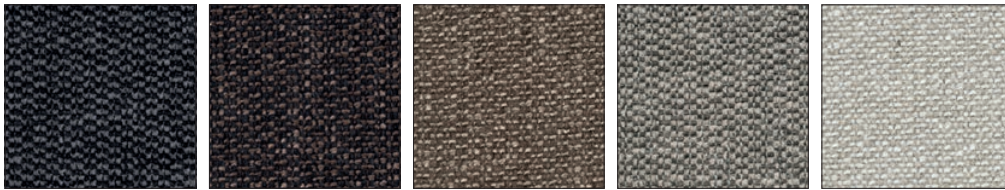


A02 SABBIA
A03 CORDA
A04 TORTORA
A05 ARGILLA
A06 CAFFÈ



A07 FUMO
A08 ANTRACITE
A09 BLU
A0B AVANA

MALMO |   79% PL - 16% CO - 5% PC gr/m² 442 | Martindale >40.000 cicli/rubs - EN ISO 12947-2



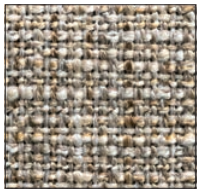
SQ1 ANTRACITE
SQ2 CAFFÈ
SQ3 CORDA
SQ4 TORTORA
SQ5 SABBIA



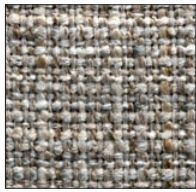
SQ6 ACQUAMARINA
SQ7 ROSSO
SQ8 SENAPE

 PROGRAMMA MADE TO ORDER - CATEGORIA D

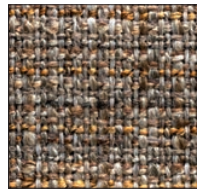
KALIX | 54% PC - 46% PL gr/m² 440 | Martindale 40.000 cicli/rubs - EN ISO 12947-2



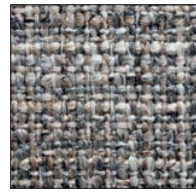
S8P
ECRU



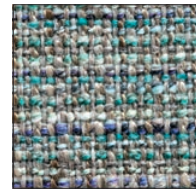
S8Q
SABBIA



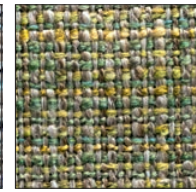
S8R
MARRONE



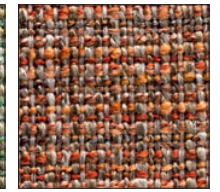
S8S
GRIGIO



S8T
BLU



S8U
VERDE



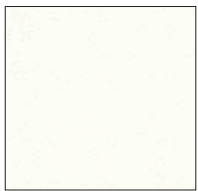
S8V
ROSSO

SKUBA | 84% PVC - 10% PL - 6% PU gr/m² 700 | Martindale >100.000 cicli/rubs - EN ISO 5470-2 Met.1

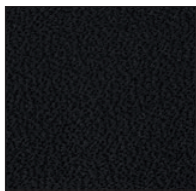


*

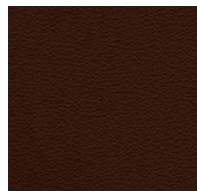
Pulire utilizzando solo acqua tiepida e sapone neutro.



S92
BIANCO OTTICO



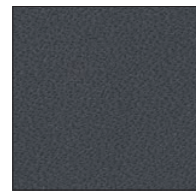
S93
NERO



S94
MOKA



S95
TORTORA



S96
GRIGIO



S98
NOCCIOLA



S99
SENAPE



SA0
SKY BLUE

 PROGRAMMA MADE TO ORDER - CATEGORIA E

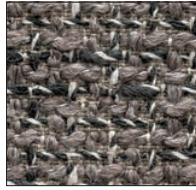
BOUCLÉ | 37% PL - 21% PC - 19% VI - 14% CO - 8% LI - 1% PA gr/m² 522 | Martindale 40.000 cicli/rubs - EN ISO 12947-2



SLV
CANAPA



SLW
ANTRACITE

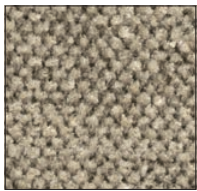


SLX
TORTORA

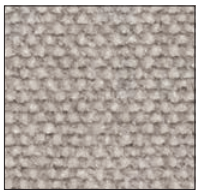


SSQ
MATTONE

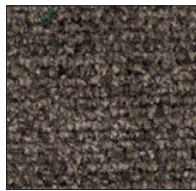
CULLINAN | 40% VI - 35% CO - 25% PC gr/m² 600 | Martindale 30.000 cicli/rubs - EN ISO 12947-2



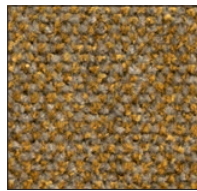
ST8
ECRU



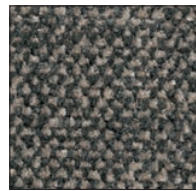
ST9
BIANCO



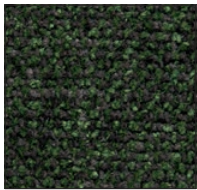
SU0
MARRONE



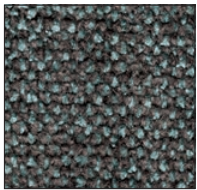
SU1
GIALLO



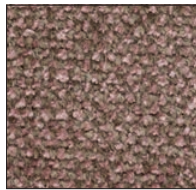
SU2
GRIGIO



SU3
VERDE



SU4
BLU



SU5
ROSA

MOGOL | 87% PL - 13% LI gr/m² 436 | Martindale >95.000 cicli/rubs - EN ISO 12947-2



S5J
BIANCO



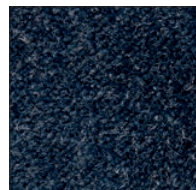
S5K
ECRU



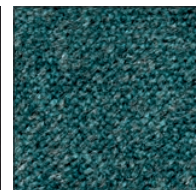
S5L
MARRONE



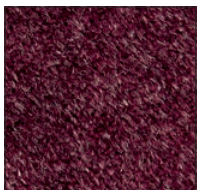
S5M
ANTRACITE



S5N
BLU



S5P
ACQUAMARINA



S5Q
BORDEAUX



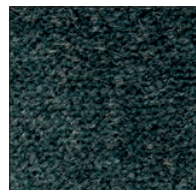
S5R
ROSA



S5S
GIALLO



S5T
VERDE



S5U
BOSCO

 PROGRAMMA MADE TO ORDER - CATEGORIA E

PARIS | 47% PC - 22% PL - 20% CO - 11% VI gr/m² 714 | Martindale 40.000 cicli/rubs - EN ISO 12947-2



SQM
CREMA



SQN
BEIGE



SQP
MARRONE



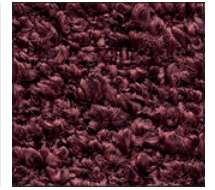
SQQ
GRIGIO CHIARO



SQR
TORTORA



SQS
ANTRACITE



SQT
BORDEAUX



SQU
BLU

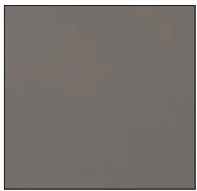
 PROGRAMMA MADE TO ORDER - CATEGORIA F

CUOIO

Il «Cuoio» si ottiene dal pellame di bovino europeo tagliato in spessori maggiori rispetto alla pelle ed è sottoposto prima alla concia e successivamente a finitura coprente.



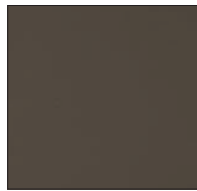
L03
NERO



L04
TORTORA



L05
NATURALE



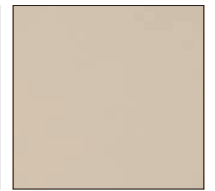
L06
FANGO



L07
BORDEAUX



L10
COGNAC NUVOLATO



L11
BEIGE

ATTENZIONE: rivestimento disponibile solo per modelli FIFTIES CS1854-A MTO e CS1864-A MTO.

PROGRAMMA MADE TO ORDER - CATEGORIA F

PELLE ESPRIT

La pelle utilizzata da Calligaris si ottiene dalla parte più nobile del pellame (il fiore) di bovino europeo tagliato in spessori variabili secondo le esigenze e sottoposto a concia. La finitura esterna è ottenuta con pigmenti a base d'acqua.



PROGRAMMA MADE TO ORDER - CATEGORIA G

PELLE EMOTION STANDARD

Pelle bovina mezzo fiore a grana naturale di spessore finito 1,2 - 1,4 mm. Tintura passante; rifinitura con pigmenti e resine. Articolo con mano morbida, tatto ceroso e aspetto semiopaco.



PELLE EMOTION EXTENDED

Pelle bovina mezzo fiore a grana naturale di spessore finito 1,2 - 1,4 mm. Tintura passante; rifinitura con pigmenti e resine. Articolo con mano morbida, tatto ceroso e aspetto semiopaco.



L1B
PENICILLIN

L1C
PAPYRUS

L1J
CAFFELLATTE

L1M
CLAY

L1N
AVANA

L1P
TAN

L1S
SWAMP



L1X
DASH

L1Y
MARBLE

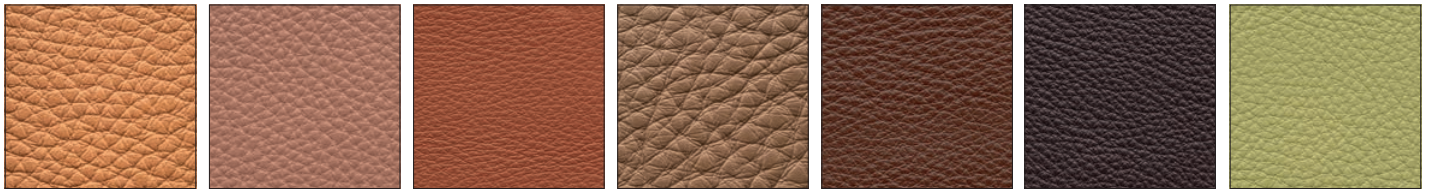
L2J
CARIOCA

L2M
CLAW

L2P
BEGONIA

L2U
PARROT

L2W
PHONEBOX



L3B
DUNE

L3C
POTTERY

L3D
VOLCANO

L3J
ANTILOP

L3K
ACAJOU

L3N
CIOCCO

L3S
LIME



L3T
MOUD

L3U
TERRAGON

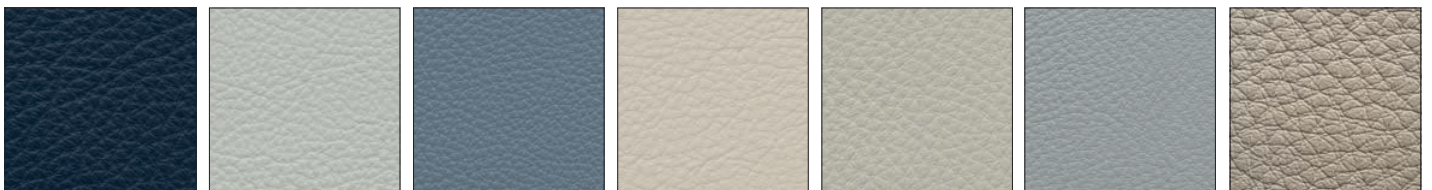
L3W
CAMOUFLAGE

L3X
BIRCH

L4A
OXIDE

L4C
OTTANIO

L4E
CEDAR GREEN



L4M
DEEP

L4N
PLASTER

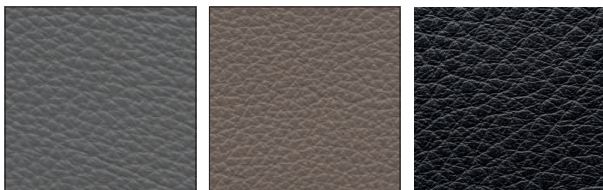
L4T
STEEL BIRD

L4W
LAMB

L4X
CINDER

L4Y
CIMENT

L5C
TURTLEDOVE



L5E
IRON

L5F
GREY

L5J
BLACK INK